



FIVE DECADES OF COOPERATION AND COMMITMENT TO SCIENCE AND ENVIRONMENTAL PROTECTION

XXXIV ANTARCTIC TREATY CONSULTATIVE MEETING - BUENOS AIRES JUNE 20TH - JULY 1ST, 2011

Agenda Item:	ATCM 10, CEP 7c
Presented by:	IAATO
Original:	English

# **Report on IAATO Operator use of Antarctic Peninsula Landing Sites and ATCM Visitor Site Guidelines, 2009-10 & 2010-11 Seasons**



# Report on IAATO operator use of Antarctic Peninsula Landing Sites and ATCM Visitor Site Guidelines, 2009-10 & 2010-11 Season

Information Paper submitted by IAATO

## Introduction

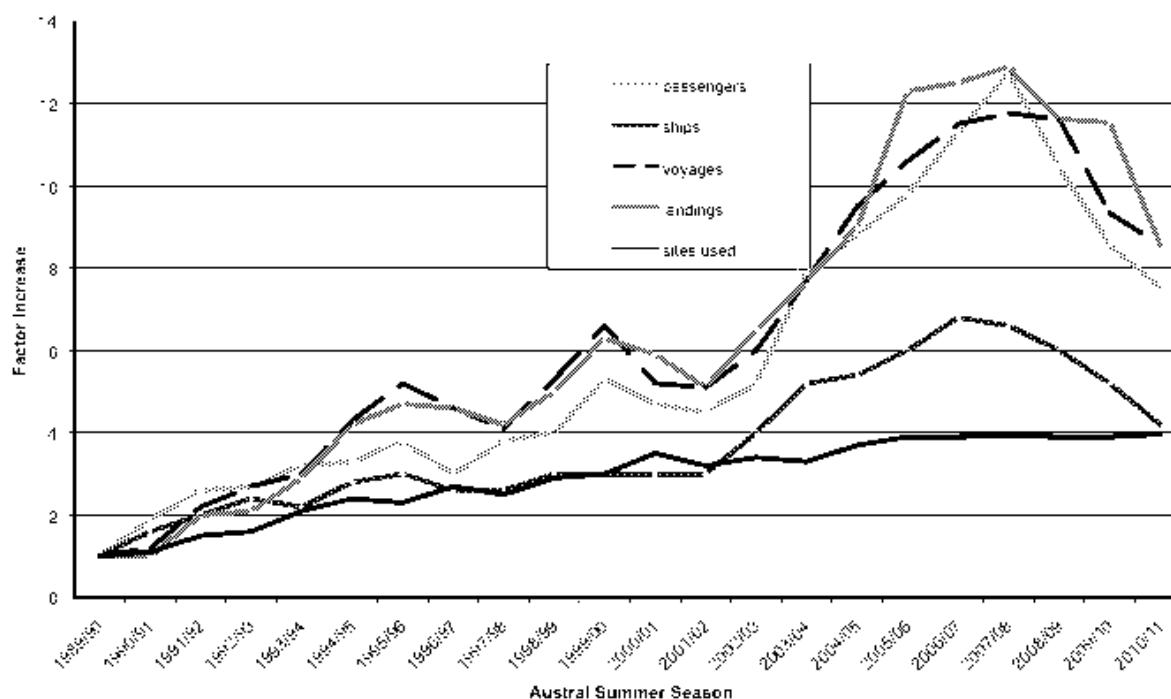
IAATO is committed to reporting to the CEP and ATCM information on IAATO operator landing site and site guideline use. Due to the timing of ATCM XXXIII, IAATO was unable to submit information on IAATO Member landing site and site guideline use for the 2009-10 season. This information is presented here, along with information on the recently completed 2010-11 season.

Additional information on IAATO member activities can be found in ATCM XXXIII IP113 *IAATO Overview of Antarctic Tourism: 2009-10 Season and Preliminary Estimates for 2010-11 and Beyond* and ATCM XXXIV IP 106 *IAATO Overview of Antarctic Tourism: 2010-11 Season and Preliminary Estimates for 2011-12 Season*.

## Antarctic Peninsula traditional ship-borne tourism

Antarctic tourism continues to be primarily focused on traditional ship-based tourism in the Antarctic Peninsula, representing over 95% of all landed activity. Figure 1 provides a comparison of the factor increase in different aspects of this activity (number of passengers, ships, voyages, landings made and sites used). As all traditional ship-based tourism to the Peninsula during the 2009-10 and 2010-2011 season was conducted by IAATO member operators, it is believed that this information is reflective of actual levels of this activity.

Figure 1: Factor Change in Traditional Landing Ship borne Tourism (not including sailing or motor vessels carrying 12 or fewer passengers) in the Antarctic Peninsula 1989-2011



The decrease in all activities during this period is believed to be a continued consequence of the global economic downturn. This is borne out by the comparative decreases which took place across the board from the peak 2007-08 season, just prior to the economic downturn. Notably, the most substantial decrease was in the number of passengers, down 41% from the peak of 2007-08, while the number of ships decreased by 36%, due to a combination of vessels being retired, companies pulling out of the market or collapsing. Equally, the number of voyages has dropped by 27% over that same period. The number of landings made has dropped down just over seventeen percent (17%) but the number of sites used has stayed constant.

### **Specific Landing Site Use**

Appendix 1 Tables 1 and 2 illustrate the 20 most-visited sites in terms of landings made for the 2009-2010 and 2010-2011 season respectively. For both seasons this represents *circa* seventy percent (70%) of the total number of landings made and indicates that the tendency for landings to concentrate at a few popular sites continues.

All but three of these most-visited sites – Port Charcot, Mikkelsen Harbour and Hovgaard Island – are covered by site specific management plans, either through ATCM Site Guidelines or through National Program management through their proximity to stations. While visits by IAATO member operators to these sites follow standard codes of conduct for visits to Antarctic landing sites, IAATO would suggest that priority be given to considering development of site guidelines for Port Charcot and Mikkelsen Harbour in particular.

Appendix 2 illustrates the total number of landings made per day at all sites within the Antarctic Peninsula. For 2009-2010, the season was 148 days (down from 173 the season before). The 2010-2011 season was 163 days. In both instances the season began early due to the first departure of an ice breaker for an early voyage to visit an Emperor Penguin colony. For both seasons, the last landing was made on 28th March, before the vessels left the area. The core season ran for 140 days, from the beginning of November through to mid-March. On the basis of the full season dates, no site received an average of one visit per day and on the basis of the core season only Goudier Island received an average of more than one visit per day.

Additional tourism statistics are posted on the IAATO website ([www.iaato.org](http://www.iaato.org)).

### **Use of ATCM Endorsed Site Guidelines**

An assessment of the use of the sites covered by the ATCM Site Guidelines was conducted through feedback directly from field staff and analysis of the Post Visit Report Forms.

The total number of known landings made at sites covered by the ATCM Site Guidelines, including a listing of the number of occasions the daily visitation limits were met for both seasons is shown in Appendix 3. Co-ordination among IAATO field staff remains very effective. Analysis of the Post Visit Report Forms noted that on no occasion during the 2009-2010 season the number of visits per day exceeded the limits set by the guidelines. The 2010-2011 season data is still being analysed.

### **Conclusion**

IAATO will continue to provide this information annually to the CEP and ATCM for their activities. The IAATO Members remain interested in understanding better the use of ATCM Site Guidelines by non-IAATO visitors.

## Appendix 1: Top Twenty Most Visited Sites

Table 1: Top Twenty Most Visited Sites during the 2009-10 Season

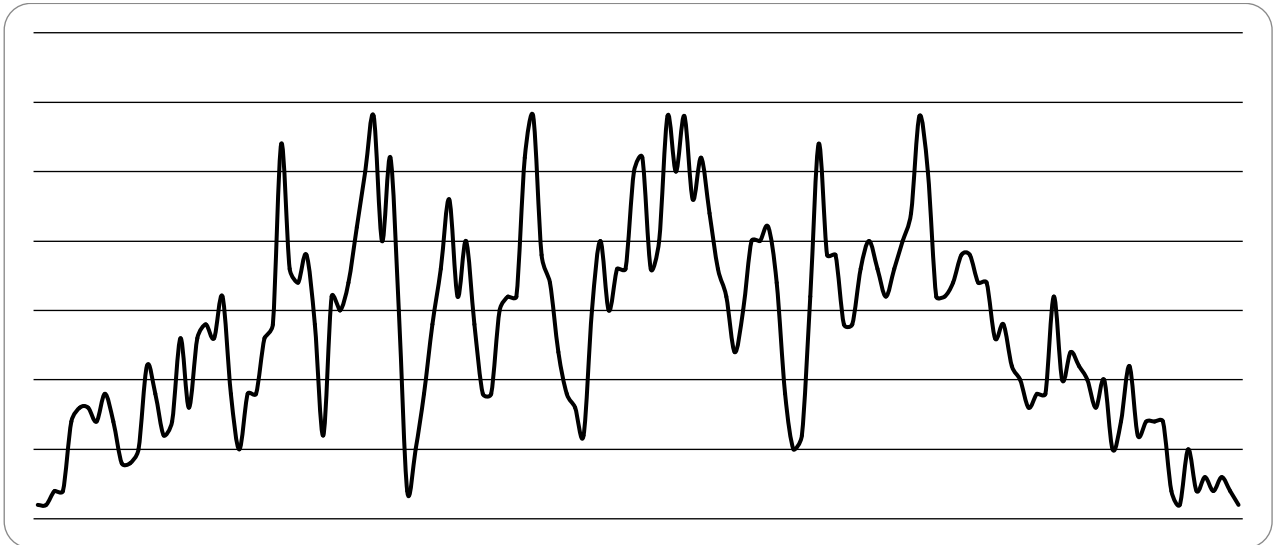
Rank	Landing Site	Number of Landed Visits	Number of Landed Tourists	Site Guidelines / National Programme Management
1	Goudier Island	146	12,413	ATCM Site Guidelines
2	Whalers Bay	131	11,877	ATCM Site Guidelines
3	Neko Harbour	127	11,617	ATCM Site Guidelines
4	Petermann Island	119	10,778	ATCM Site Guidelines
5	Jougla Point	108	8260	ATCM Site Guidelines
6	Cuerville Island	104	10309	ATCM Site Guidelines
7	Vernadsky Station	101	7225	National Programme Management
8	Almirante Brown	91	9808	National Programme Management
9	Half Moon Island	85	9760	ATCM Site Guidelines
10	Aitcho - Barrientos Island	53	4521	ATCM Site Guidelines
11	Danco Island	53	3899	ATCM Site Guidelines
12	Damoy Point/Dorian Bay	52	1780	ATCM Site Guidelines
13	Brown Bluff	49	4675	ATCM Site Guidelines
14	Pléneau Island	31	1427	ATCM Site Guidelines
15	Telefon Bay	31	2256	ATCM Site Guidelines
16	Port Charcot	26	2018	
17	Mikkelsen Harbour	24	1855	
18	Pendulum Cove	24	1790	ASMA Management Plan
19	Argentine Islands/Wordie Hut	23	1118	ATCM Site Guidelines
20	Hovgaard Island	23	203	

Table 2: Top Twenty Most Visited Sites during the 2010-2011 Season

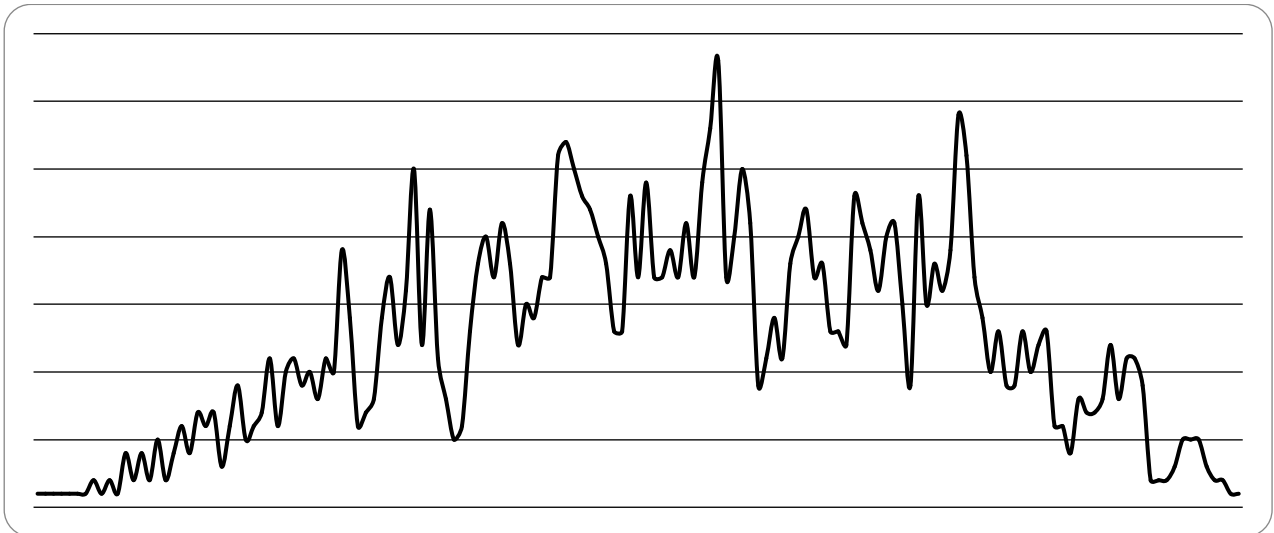
Rank	Landing Site	Number of Landed Visits	Number of Landed Tourists	Site Guidelines / National Programme Management
1	Goudier Island	144	12654	ATCM Site Guidelines
2	Whalers Bay	119	10398	ATCM Site Guidelines
3	Cuerville Island	114	10495	ATCM Site Guidelines
4	Neko Harbor	111	10569	ATCM Site Guidelines
5	Jougla Point	86	6505	ATCM Site Guidelines
6	Petermann Island	82	7039	ATCM Site Guidelines
7	Half Moon Island	77	7186	ATCM Site Guidelines
8	Aitcho - Barrientos Island	67	5385	ATCM Site Guidelines
9	Almirante Brown	67	6128	National Programme Management
10	Vernadsky Station	63	3941	National Programme Management
11	Brown Bluff	48	5023	ATCM Site Guidelines
12	Damoy Point/Dorian Bay	45	1780	ATCM Site Guidelines
13	Danco Island	40	3016	ATCM Site Guidelines
14	Telefon Bay	40	2862	ATCM Site Guidelines
15	Paulet Island	28	2908	ATCM Site Guidelines
16	Port Charcot	27	2524	
17	Waterboat Point/Gonzalez Videla Station	26	1693	National Programme Management
18	Mikkelsen Harbor	25	1356	
19	Pendulum Cove	24	1109	ASMA Management Plan
20	Frei Station	21	932	National Programme Management

**Appendix 2: Total number of IAATO member landings made per day, at all sites within the Antarctic Peninsula 2009-10**

*A. Total number of IAATO member landings made per day at all sites within the Antarctic Peninsula 2009-10*



*B. Total number of IAATO member landings made per day at all sites within the Antarctic Peninsula 2010-11*



**Appendix 3: Recorded Site Use at ATCM Site Guideline Sites.***A: Recorded Site Use at ATCM Site Guideline Sites 2009-10.*

<b>Landing Site</b>	<b>Total Number of Landings</b>	<b>Number of days where maximum visit limitation was met.</b>
Goudier Island	146	13
Whalers Bay	131	
Neko Harbor	127	5
Petermann Island	119	5
Jougla Point	108	3
Cuerville Island	104	3
Half Moon Island	85	1
Aitcho - Barrientos Island	53	4
Brown Bluff	49	1
Pléneau Island	31	
Telefon Bay	31	
Argentine Islands/Wordie Hut	23	2
Hannah Point	22	22
Baily Head	20	3
Devil Island	19	3
Paulet Island	19	2
Yankee Harbor	19	
Detaille Island	16	1
Penguin Island	12	
Stonington Island	9	1
Horseshoe Island	8	
Shingle Cove	5	1
Walker Bay (by Hannah Point)	5	
Cape Royds	4	1
Turret Point	2	
Snow Hill – Nordenskjold's Hut	0	

*B: Recorded Site Use at ATCM Site Guideline Sites 2010-2011*

<b>Landing Site</b>	<b>Total Number of Landings</b>	<b>Number of days where maximum visit limitation was met.</b>
Goudier Island	144	9
Whalers Bay	119	
Cuerville Island	114	5
Neko Harbor	111	3
Jougla Point	86	
Petermann Island	82	
Half Moon Island	77	
Aitcho - Barrientos Island	67	11
Brown Bluff	48	
Damoy Point/Dorian Bay	45	7
Danco Island	40	1
Telefon Bay	40	
Paulet Island	28	1
Hannah Point	20	20
Pléneau Island	19	
Yankee Harbor	18	
Detaille Island	17	1

Argentine Islands/Wordie Hut	17	
Baily Head	13	
Devil Island	12	1
Walker Bay (by Hannah Point)	9	
Torgersen Island	8	1
Stonington Island	7	
Snow Hill - Nordenskjolds Hut	5	
Horseshoe Island	5	
Cape Royds	4	
Turret Point	4	
Penguin Island	2	
Shingle Cove	1	
Cape Hallett	1	