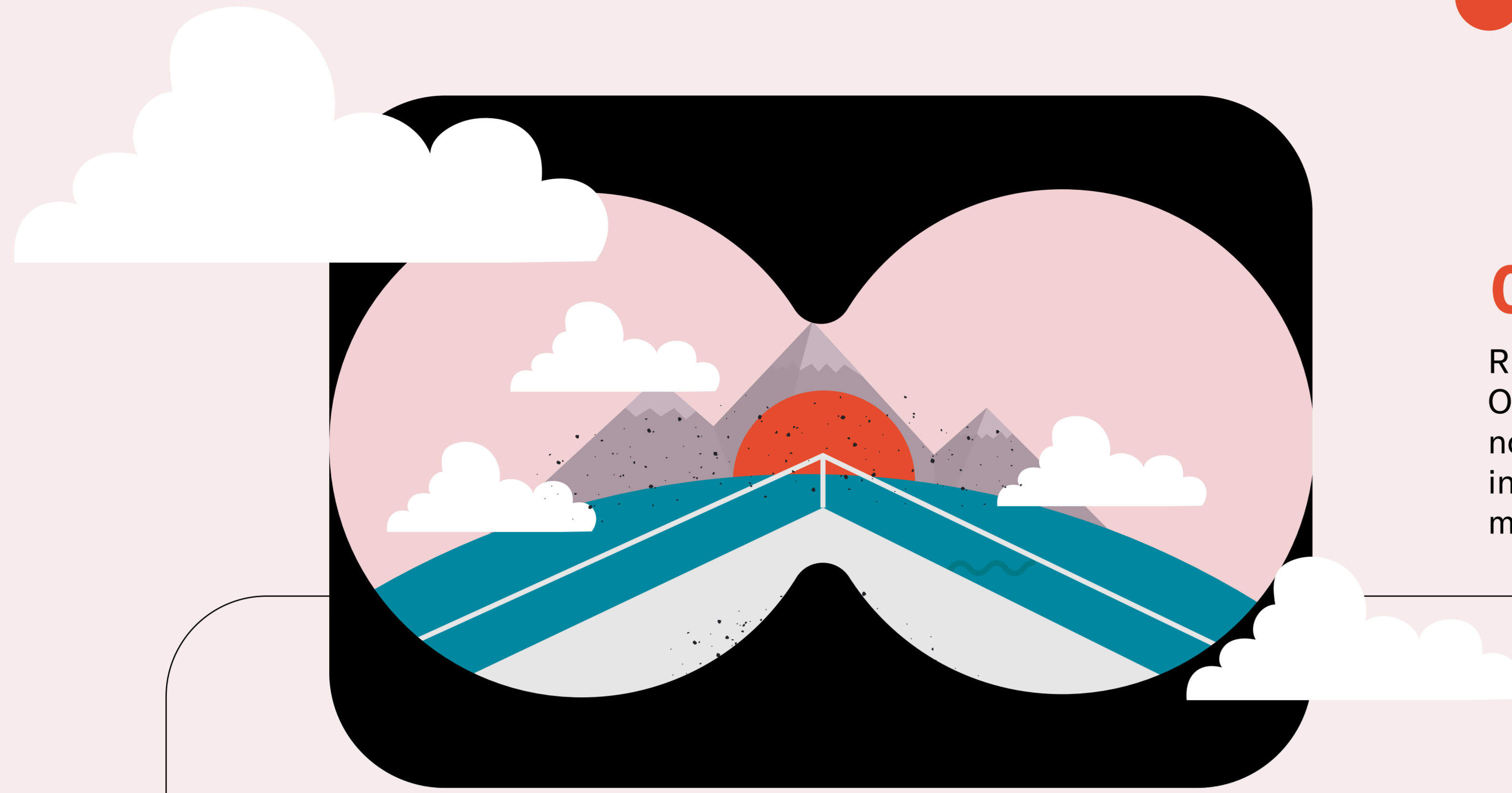


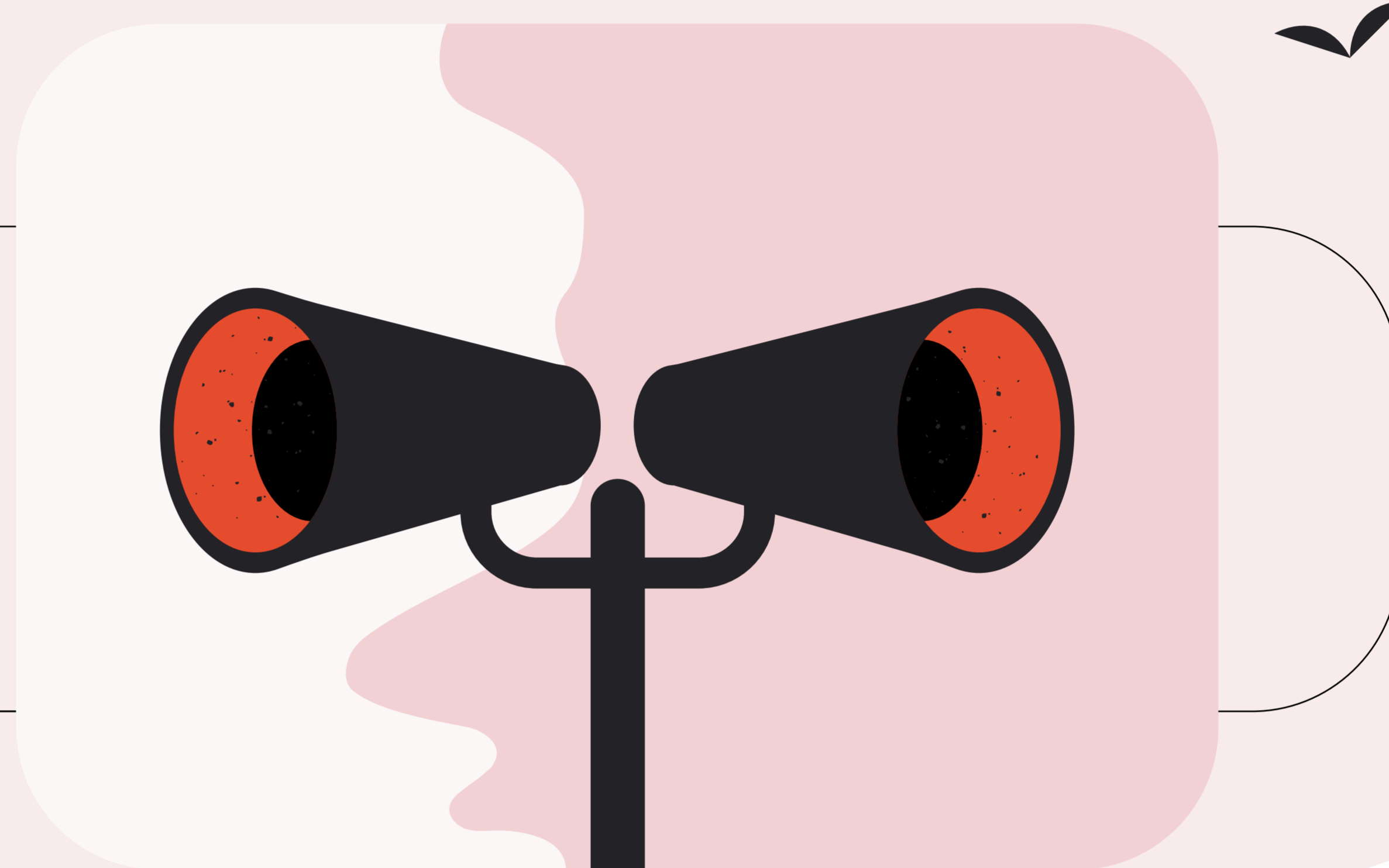
MORNING ON THE
ANTARCTIC PENINSULA

0630

Rise and shine! I head to the bridge to say good morning to the Officer on Watch, observe our current position at anchor on the north side of the island and write down the weather conditions in my expedition notebook. With a few minutes left, I make myself a strong cup of coffee. The bridge has the good stuff!

0700

A half hour before breakfast, I deliver the wake-up call by PA system into all passenger cabins. I orient them with the time and date, what we've accomplished overnight and where we are now, the current weather conditions, and remind them what we hope to do this morning.



0730-0830

It's a buffet breakfast in the dining room, with guests coming and going, a buzz building about the day's plan, with everyone getting the chance to land for a short hike to a viewpoint and to go on a small boat exploration through the bay.



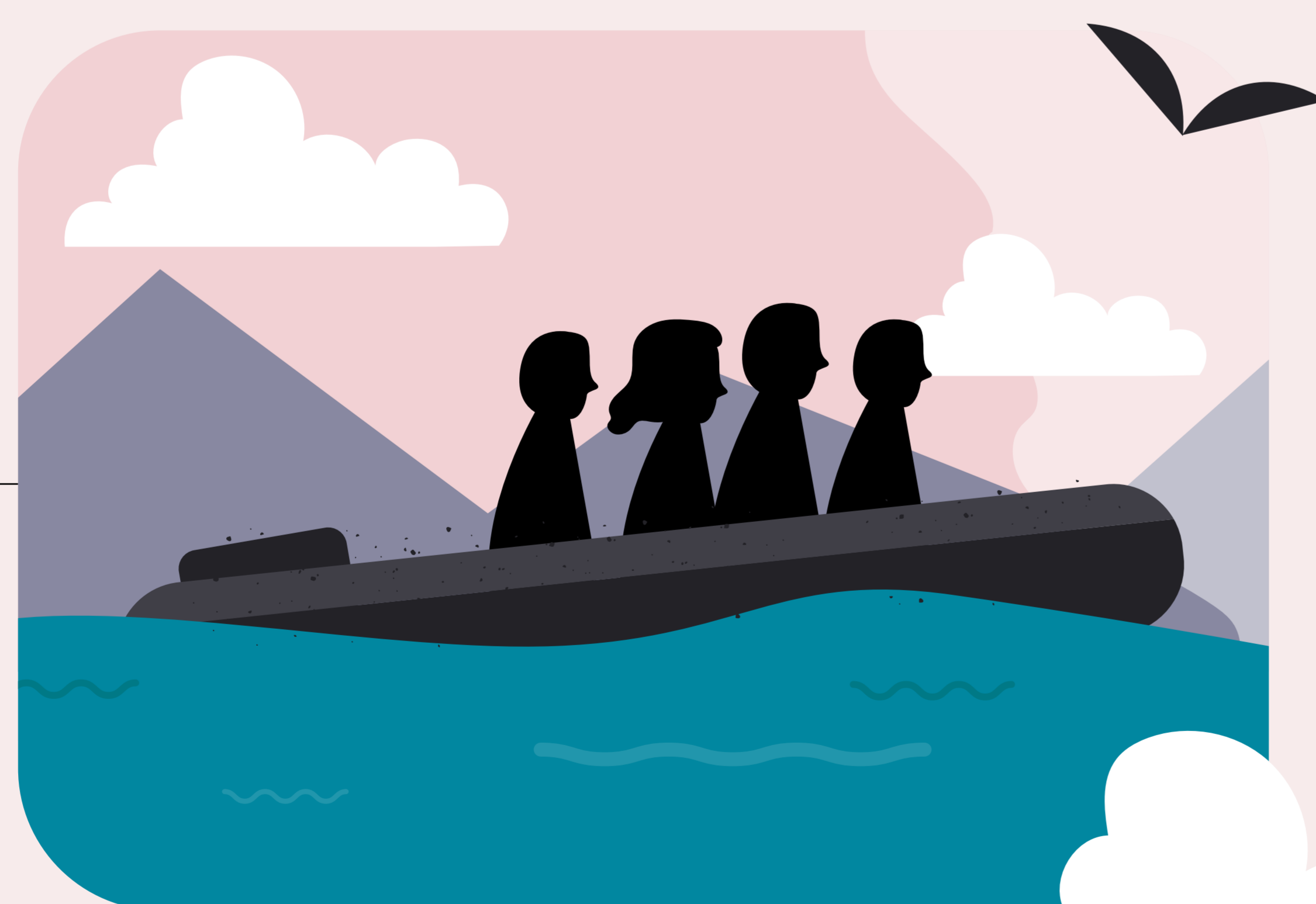
0845

The expedition team is in the mud room, fully dressed and with safety bags with emergency equipment. We are ready to go. Half will be driving small boat explorations while the other half will join me to run the landing. We have a quick meeting before heading out the door where I update the team on current wind conditions which are set to increase through the morning.



0945

By 9:45, disembarkation is complete with half the guests on shore and half out in the bay. In about an hour's time, they will switch. On shore, everything runs smoothly with the Assisting Expedition Leader assisting me in catching the boats and briefing guests at the landing site. An additional staff member is positioned nearby to assist on a section of loose rock which may be difficult for some to navigate. The remaining staff are stationed along the hike route to the viewpoint, with our historian at the top to provide background on the landing site's history



IAATO.

Ines is an Expedition Leader on a 134-passenger IAATO member vessel with a kayaking program. Here she shares a day in her life; the everyday essential tasks, the challenges and ultimately rewards of leading responsible, enriching and educational expeditions to the *Antarctic Peninsula*.