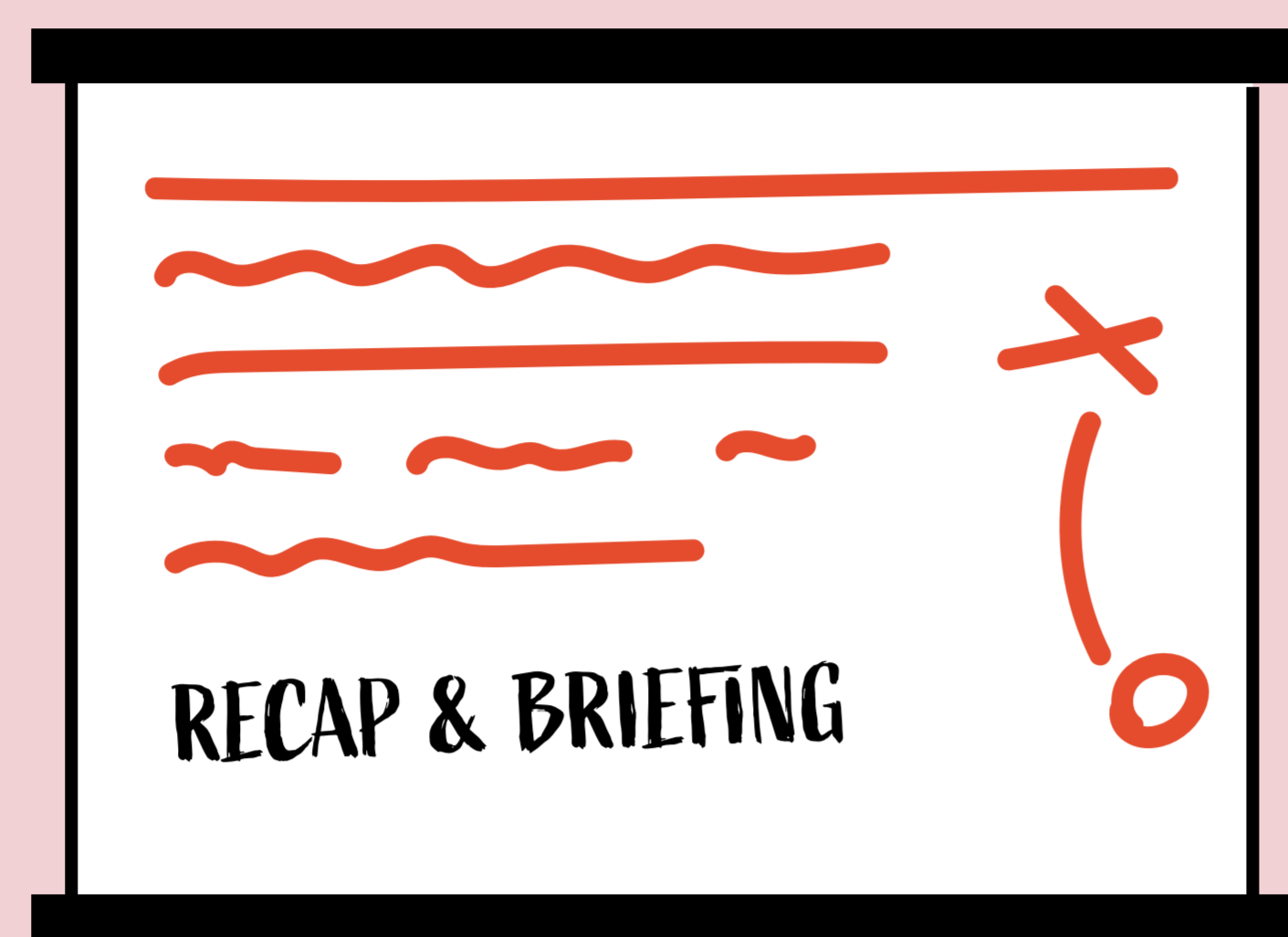


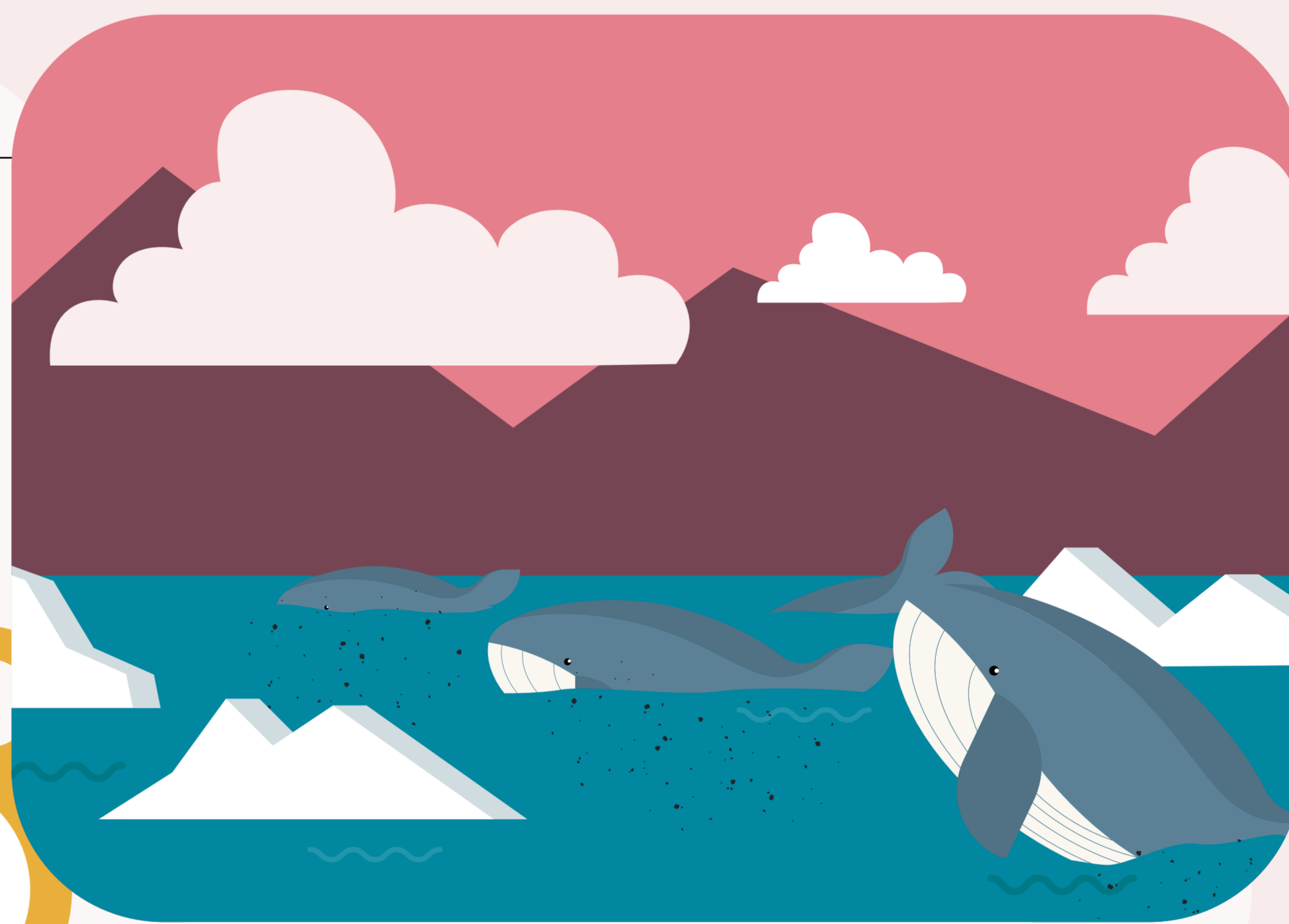
EVENING ON THE
ANTARCTIC PENINSULA

1900

All guests were back onboard 30 minutes ago and are slowly warming up from their chilly boat cruise. We gather in the lounge for our nightly ritual, the "Recap & Briefing" where I present tomorrow's plan, prepared on this occasion by the Assistant Expedition Leader over lunch, and remind everyone that what happened this afternoon is par for the course here; Antarctica always decides! The expedition team then leads a recap of the day which gives the guests a chance to ask a question of one of the naturalists or to share a special moment from their day.

1930-2100

While guests are served dinner in the dining room, I am called to the bridge as several whales have been observed in the distance. They're Humpbacks, and I decide that since we had incredible views of Humpbacks in the afternoon, and slowing our speed for a viewing would almost certainly mean a delayed start to the next morning's operation, not to change course and to let the guests continue with their dinner undisturbed.



2030

I spend a half hour with Captain, going over the day, confirming arrival and departure times for our planned excursions tomorrow, checking the weather forecast and agreeing on contingency plans. I head to the expedition office to check emails from other expedition leaders in the area, re-confirm the bookings for our landing sites tomorrow, and send a note to the office back home to let them know the day was another success, but not without its challenges.

2100

After dinner, the guests are invited to the bar for an evening of storytelling, where guides and guests can share their tales of global adventures. An hour later I head to bed, ready for my 06:30 alarm to wake me up for a brand new and exciting day in Antarctica.



IAATO.

Ines is an Expedition Leader on a 134-passenger IAATO member vessel with a kayaking program. Here she shares a day in her life; the everyday essential tasks, the challenges and ultimately rewards of leading responsible, enriching and educational expeditions to the *Antarctic Peninsula*.